

# ICOM<sup>®</sup>

## INSTRUCTIONS

### CLONING SOFTWARE

# CS-F70/F1700

## ■ Getting started

- ◇ This cloning software is designed to perform data setting and cloning for the IC-F70/F80 series VHF/UHF PORTABLE TRANSCEIVERS and IC-F1710/IC-F2710 series VHF/UHF MOBILE TRANSCEIVERS.
- ◇ **HELP WINDOW:** CS-F70/F1700 has a help window to describe functions and operation.

## ■ System requirements

To use this program, the following hardware and software are required:

### PC

- Microsoft<sup>®</sup> Windows<sup>®</sup> 98/98SE/Me/2000/XP is installed
- With RS-232C serial port (D-sub 9-pin)

### Other item

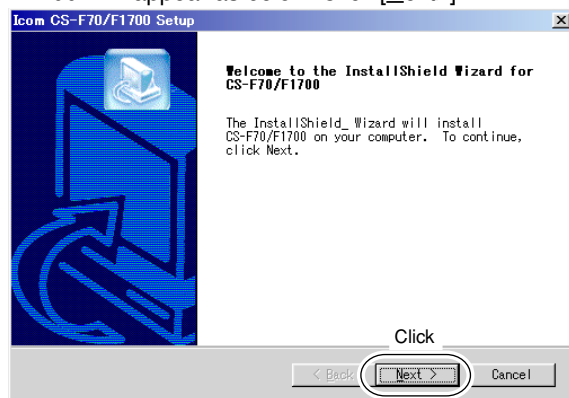
- Optional OPC-966 CLONING CABLE for IC-F70/F80 series
- OPC-1122 CLONING CABLE for IC-F1710/IC-F2710 series

### NOTE:

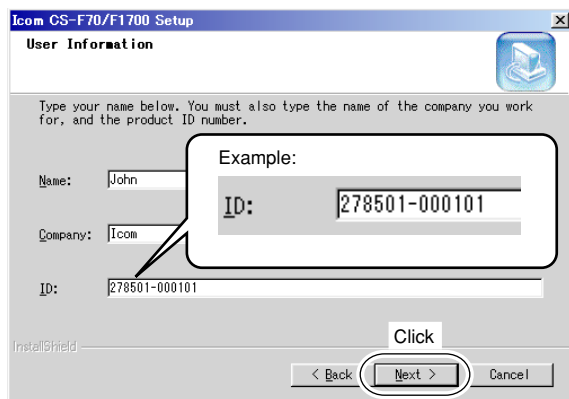
Depending on your Windows system files, the PC may require rebooting. In this case, repeat the installation from the beginning.

## ■ Software installation

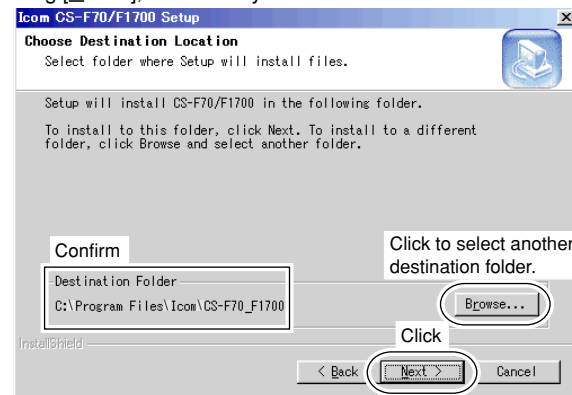
- ① Quit all applications when Windows is running.
- ② Insert the CD into the appropriate CD drive.
- ③ Double-click the "Setup.exe" contained in the 'CSF70\_F1700' folder in the CD drive.
- ④ The "Welcome to the InstallShield Wizard for CS-F70/F1700" will appear as below. Click [Next>].



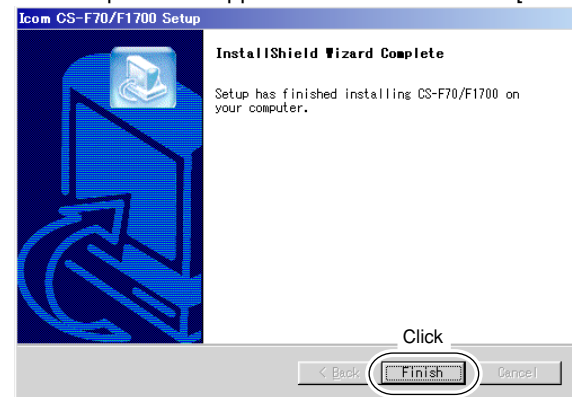
- ⑤ The "User Information" will appear as below, then type your name, your company name and the product ID number with the following manner. Then click [Next >].
  - ID number: 278501-(6 digit serial number)
  - e.g. the serial number on the CD is 000101, enter "278501-000101" as the ID number.



- ⑥ The "Choose Destination Location" will appear as below. Then click [Next>] to install the software to the destination folder. (e.g. C:\Program Files\Icom\CS-F70\_F1700)
  - Click [Browse...] to select another destination folder before clicking [Next >], if necessary.



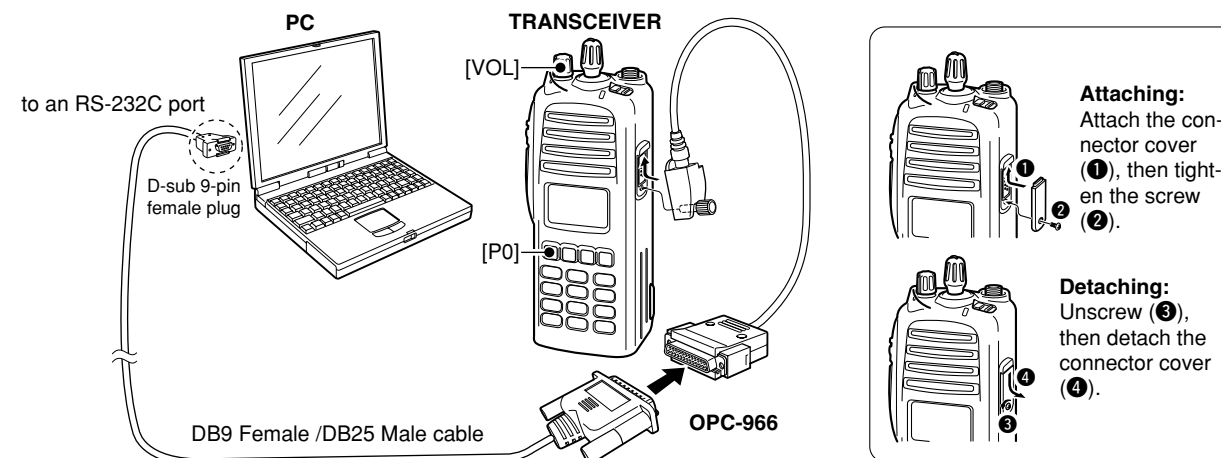
- ⑦ After the installation is completed, the "InstallShield Wizard Complete" will appear as below. Then click [Finish].



- ⑧ Eject the CD.
- ⑨ Program group 'CS-F70/F1700' appears in the 'Programs' folder of the start menu, and 'CS-F70\_F1700' icon appears on the desk top screen.

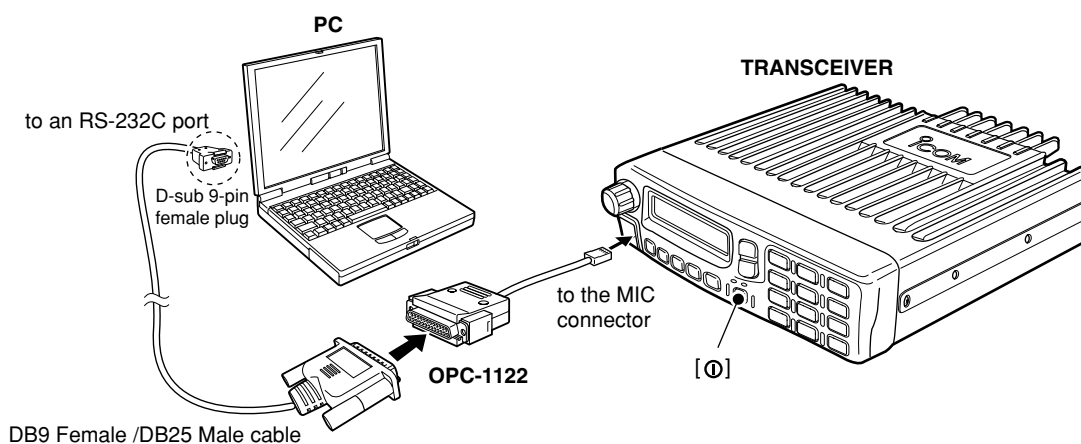
## ■ Connections for IC-F70/F80 series

- /// All cloning operations are performed from the computer's keyboard—the operation required on the transceiver side is;
- /// ① First, connect the cloning cable as illustrated below.
- /// ② While pushing and holding [P0], rotate [VOL] to turn power ON.



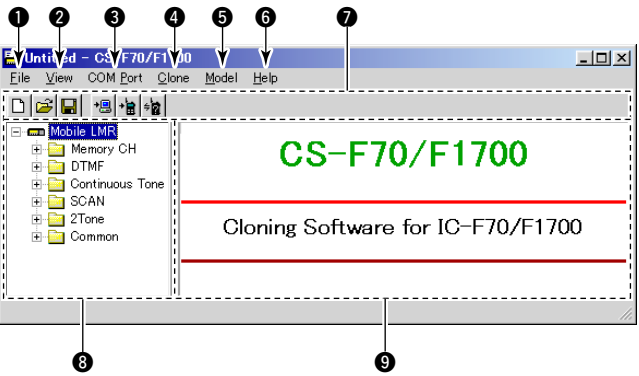
## ■ Connections for IC-F1710/F2710 series

- /// All cloning operations are performed from the computer's keyboard—the operation required on the transceiver side is;
- /// ① First, connect the cloning cable as illustrated below.
- /// ② And then push [⓪] to turn power ON.



Icom, Icom Inc. and the ICOM logo are registered trademarks of Icom Incorporated (Japan) in the United States, the United Kingdom, Germany, France, Spain, Russia and/or other countries.  
Microsoft and Windows are registered trademarks of Microsoft Corporation in the United States and/or other countries.  
All other products or brands are registered trademarks or trademarks of their respective holders.

■ Screen menus description



❶ FILE MENU [File]

Used for saving memory channel contents, printing the pre-programmed information or quitting the program, etc.

❷ VIEW MENU [View]

- Selects the displayed font size.
- Turn the Toolbar ON or OFF.

❸ COM PORT MENU [COM Port]

- Click to display the COM port (1 to 4 and More) setting dialog box.
- Set the transfer speed (Normal or High).
- NOTE: 'Check the following' dialog box appears when the COM port is not set correctly.

❹ CLONING MENU [Clone]

Click to display the cloning menu and cloning information dialog box.

❺ MODEL MENU [Model]

Click to select the appropriate model name which going to clone.

❻ HELP MENU [Help]

Click to display the help contents and cloning software revision information.

❼ TOOL BAR

Shortcut buttons appear on the tool bar when clicking the tool bar function in the [View] menu.

❽ TREE VIEW SCREEN

Click the folder icon which you want to edit.

❾ CONTENTS LIST SCREEN

Display the contents list (Memory CH information, Digital settings, etc.).

■ Programming information

- Read all the transceiver cloning data into the PC before starting editing with this software. Otherwise the frequency data may not be cloned properly to your transceiver.
- Select the model type which you are going to clone from; IC-F70/F80 series:  
Portable LMR (2Tone), Portable LMR (P25 Conventional), Portable PMR (5Tone/DTMF) and Portable BIIS PMR.  
IC-F1710/F2710 series:  
Mobile LMR (2Tone), Mobile LMR (P25 Conventional), Mobile PMR (5Tone/DTMF) and Mobile BIIS PMR.
- LMR : Land Mobile Radio. 2Tone function is available.
- PMR : Private Mobile Radio. 5Tone function is available.
- BIIS PMR: Binary Interchange of Information and Signaling. MSK and 5Tone functions are available.

- Double click the desired cell in the memory channel screen directory, or right-click the cell then click [Edit... Enter].

- You can click the pull down menu to select and change the channel setting depends on the item.
- You can edit it directly.

- Click [Help] to display the help screen for the item.

Edit...	Enter
Copy	Ctrl+C
Paste	Ctrl+V
Up	Ctrl+Up
Down	Ctrl+Down
Clear	
Delete	Del
Insert	Ins
Help	

(Edit menu)

■ Cloning menu

The **Memory CH**, **Digital**, **MSK**, **DTMF**, **Continuous Tone**, **SCAN**, **2Tone**, **5Tone** and **Common** menus allow you to set the transceiver customised.

◆ Memory CH

- Zone Operation : Set a zone conditions, each zone name and capacity (available number of channels).
- Zone 1 to 32 : Set the operating frequency and details of the operating conditions for each memory channel that is assigned into a zone.

◆ Digital

(Available: Portable LMR (P25 Conventional) or Mobile LMR (P25 Conventional) only)

- Individual ID : Set the individual ID with hexadecimal or decimal. And enter the ID name.
- Talkgroup ID : Set the talkgroup ID with hexadecimal or decimal. And enter the ID name.
- NAC CH : Set a 3-digit RX/TX NAC code with hexadecimal, respectively.
- Option : Set the Individual option (ID-MR, EDIT ID, etc.), Talkgroup option (Talkgroup Hang Timer, Talkgroup Display on Mode Change, etc.) and the digital mode configuration (Global ID, Unit ID, etc.).

◆ MSK (Available: Portable BIIS PMR or Mobile BIIS PMR only)

- ID Range : Set the Individual, Group and Common ID range.  
And set the Country code and Killer ID.
- Own ID/Group : Set the Own/Group IDs and Text.  
And set the Alert and Bell icon conditions for a matched ID reception.

- Call List : Enter the other transceiver's individual/group IDs.  
And set the Input Digit, Text, etc.
- Message—Status: Enter the RX/TX status text.  
And set the RX/TX Status Beep condition, auto transmit function, etc. for a status call reception and transmission.
- Message—SDM : Enter up to 8 SDM (Short Data Message). And set the desired SDM indication capability ON or OFF.
- Timing & Error : Set the call parameter for NA, NM, Busy Check Timer, etc.
- Config. : Set the MSK configuration for the encode/decode, ANI, status and GPS settings.

◆ DTMF

- DTMF Autodial : Enter the DTMF Code and Text.
- DTMF Settings : Set the time period/signal length for the DTMF Timer, First Timer, \* # Timer.

◆ Continuous Tone

- Continuous Tone : Select the desired CTCSS frequency from the list or enter a 3-digit DTCS code with polarity, N (Normal) or I (Inverse).
- Continuous Tone Setting : Set the Continuous Tone Setting items for Tone Burst, CTCSS Reverse Burst Timer, etc.

◆ SCAN

- Scan List : Set the scanning mode, Display Text for indication during scan, text indication capability and PWR Save\*.  
\*Available when Portable model is selected.
- Scan Setting : Set the Scan Setting items for Stop A/B Timer, Resume Timer, Power ON Scan, etc.

◆ 2Tone

- (Available: Portable LMR, Portable LMR (P25 Conventional), Mobile LMR, Mobile LMR (P25 Conventional) only)
- Code CH : Enter the tone code frequency, period and Text. And select the 2Tone code type for transmission, bell indicator, beep, etc. conditions for a matched RX code signal reception.
- RX Code Setting : Set the time period/signal length for the Notone, Group and Beep Repeat.

◆ 5Tone (Available only when PMR/BIIS PMR is selected)

- (Available: Portable PMR, Portable BIIS PMR, Mobile PMR, Mobile BIIS PMR only)
- RX Code CH : Enter the RX code and Text. And select the bell indicator condition, answer back call capability, etc. for a matched RX code signal reception.
- RX Code Setting : Set the time period/signal length for the Link A, ID Decode and Beep Repeat. And set the Compare Digit for the 5Tone decoder detection.
- TX Code CH : Enter the TX code and Text. And select the answer back call code decode/indication and the automatic 5Tone mute release capabilities, etc.

- TX Code Setting : Set the time period/signal length for the Long Tone, Link R/1/2, Lead out Delay and ABC Decode. And Set the Displayed Digit, PTT Call at Inaudible capability and the special tone code.
- Format : Set the time period for the Tone Period, Notone Timer and Tone Length in the format.
- User Tone : Enter the specialized tone frequency for encode, and set the frequency range (high and low) for decode.

◆ Common

- Key & Display : Assign the desired functions to the programmable function keys. And set the keypad operation, beep audio frequency, indication mode 1 line or 2 lines, etc.
- Set Mode : User set mode enables you to customize the transceiver operation to suit your preferences and operation style.  
• Available set mode functions are **Backlight**, **LCD Contrast**, **Beep**, **Beep Level**, **SQL Level**, **AF Min Level**, **Mic Gain**, **VOX Gain**, **VOX Delay**, **Horn**, **Battery Voltage**, **Signal Moni** and **System Info**.  
(Depending on the selected model.)
- Common : Commonly set items as Clone Comment, Security, Auto Reset, Scrambler, etc. items.
- Character Editor : Up to 16 original characters or symbols can be edited/created for a variety of information indication.

**NOTE:** The above instructions are for reference only. Please refer to the HELP file of the cloning software for the function or setting details.